






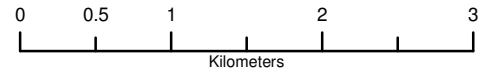


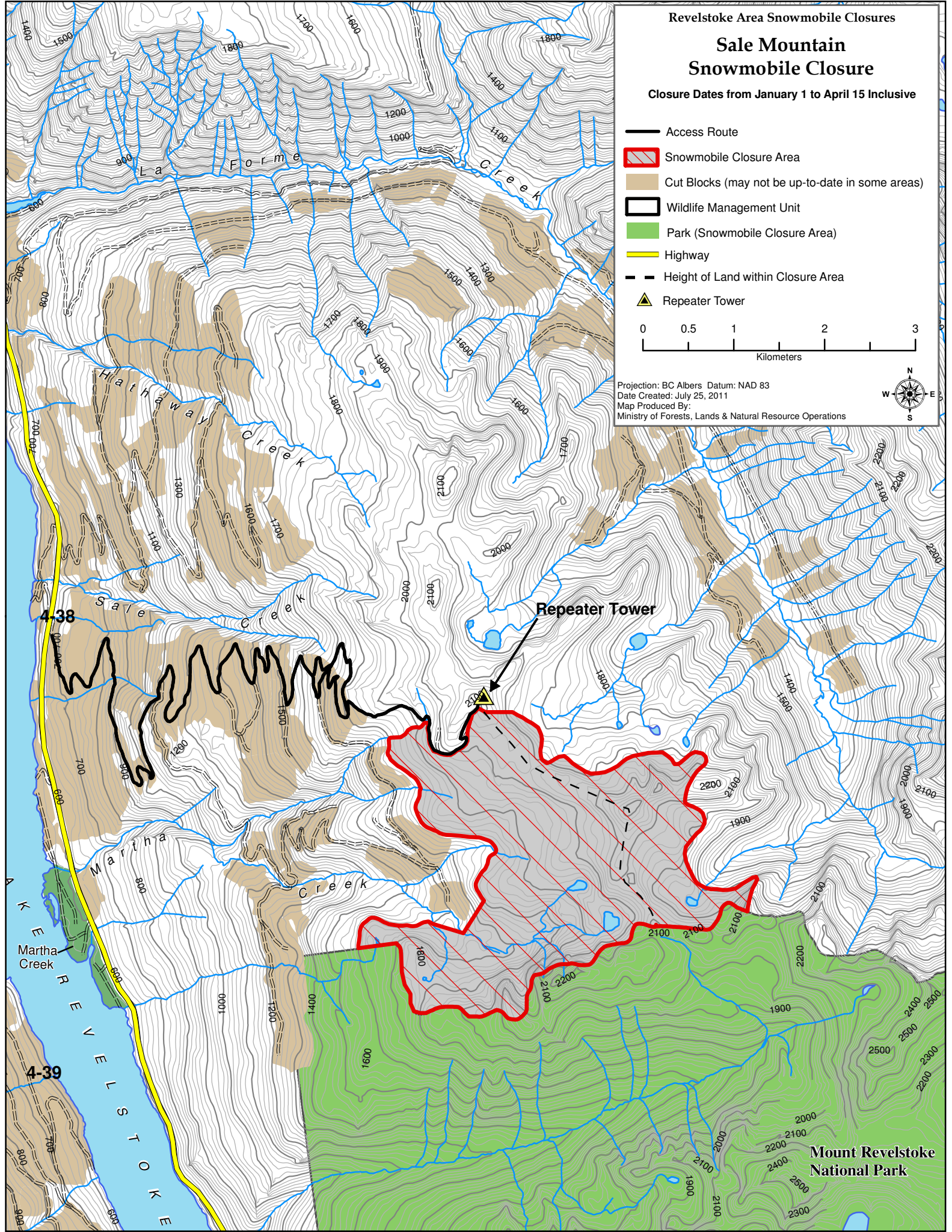
Sale Mountain Snowmobile Closure

Closure Dates from January 1 to April 15 Inclusive

- Access Route
-  Snowmobile Closure Area
-  Cut Blocks (may not be up-to-date in some areas)
-  Wildlife Management Unit
-  Park (Snowmobile Closure Area)
-  Highway
-  Height of Land within Closure Area
-  Repeater Tower



Projection: BC Albers Datum: NAD 83
Date Created: July 25, 2011
Map Produced By:
Ministry of Forests, Lands & Natural Resource Operations



Repeater Tower

Mount Revelstoke
National Park