



**REVELSTOKE
SNOWMOBILE
CLUB**

2020-2021 EDITION

SLEDDER GUIDE

REVELSTOKE.

— BRITISH COLUMBIA —



2020 TRAIL MAPS

Find the perfect terrain
to rip through

CLUB INFO + EVENTS

Learn what's new
this season

EXPERIENCE GUIDE

Discover where to stay
and play in Revy

NOTICE BOARD

Revelstoke Search & Rescue (REVSAR)

Snowmobilers: Once you leave the groomed trail, you are in the backcountry. Proper preparedness is essential. Check the weather conditions and avalanche forecasts. Have a trip plan: let people know where you will be and when you are expected to return. Be prepared to spend the night: bring extra food, clothing, water, and fire making supplies. In case of emergency, call 911. RCMP will coordinate and dispatch the appropriate parties for responding to the incident. Bad weather and avalanche conditions impact the REVSAR's rescue attempts. Call for help immediately, do not wait until near dark. If you do not know the terrain, do not follow tracks. You may not have the snow machine or riding ability to get out. Make responsible decisions, so that you go home every night.



The BC Snowmobile Federation (BCSF)

The BC Snowmobile Federation (BCSF) unites snowmobile clubs across the Province to improve safety, the growth of our sport, protection of the environment and securing access to public lands for all. A portion of your club membership to the Revy Sled Club is provided to the BCSF to provide necessary funding to our Provincial snowmobile voice. The BCSF participates at the highest levels of Government and it allows clubs across the Province to be unified in their objective to be considered a key stakeholder in all land and wildlife planning. Revy Sled Club is proud to stand together with other snowmobile clubs across BC under the united voice of our Federation the BCSF. Visit avalanche.ca for more information. For more information, visit bcsf.org



CONTENTS

3	Economic Impact Study
5	News + Memberships
8	Team + Grooming
9	Experience Guide
17	Caribou Closures
19	Events Calendar
20	Riding Areas + Trail Maps
35	Photos + History

Who are snowmobilers and what direct value do they bring to Revelstoke?



61%
of snowmobilers
earn at least
\$100K



Direct
Spending
by Snowmobilers
\$17.5 →
MILLION ANNUALLY



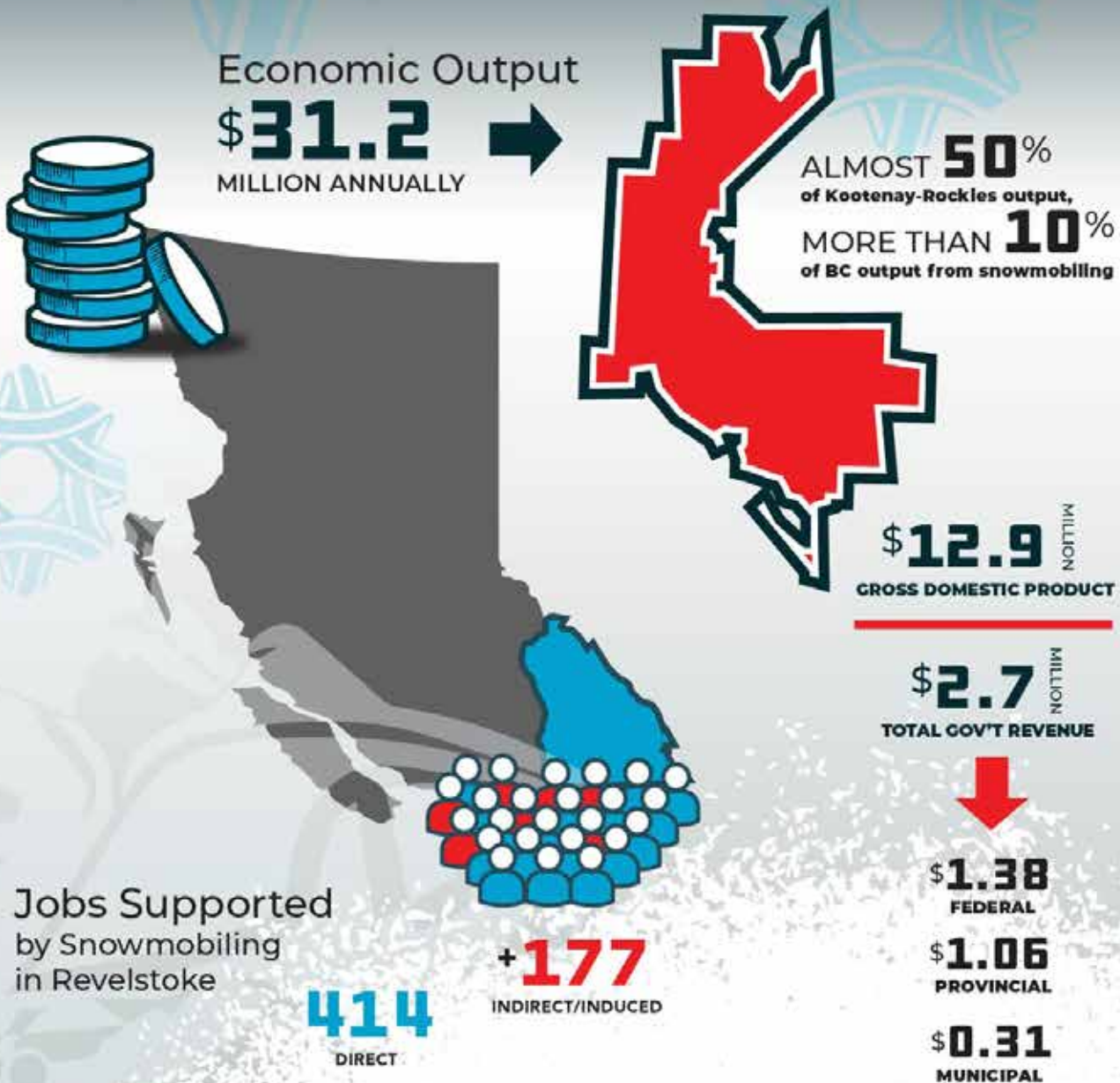
**REVELSTOKE
SNOWMOBILE
CLUB**



REVELSTOKE
SNOWMOBILE
CLUB

What is the relative value of snowmobiling in Revelstoke?

COMPARED TO REGIONAL AND PROVINCIAL OUTPUT



THE CLUB

We strive to be a global leader in snowmobile tourism whilst promoting environmental conservation for the protection of our backcountry. In 2019, the Club had over 800 members and almost 28,000 visiting riders.



COVID-19 Update

2020 has brought some unexpected challenges with ongoing concerns of the COVID-19 pandemic. The Club has adapted its health and safety best practices. Please familiarize yourself with the changes below:

- All Recreation Sites and Trails are open throughout the province
- Frisby and Boulder cabins will have a maximum occupancy to maintain 2 m physical distancing
- RSTBC signs will be posted at the trailheads, outhouses, and cabins
- Event participation will not be greater than 50 attendees (registration is required)
- Backcountry facilities are not maintained regularly
- Take precautions and manage your own risk
- Bring your own Clean Trip Kit
- Take precautions by sanitizing your hands often
- Assist with sanitizing surfaces at the cabins
- Cleaning supplies will be available



Recreation Sites
and Trails BC

Our mission

Delivering a world class snowmobile experience by offering the highest quality trails, warmup shelters and events. We strive to build a strong snowmobile community founded on respect for others and the environment.

Did you know?

Many of our trails are named after the pioneers of snowmobiling in our area.

Photo credit: Pat (Sledder Mag)

MEMBERSHIP

Club membership is yearly and includes: Trail pass for Boulder Mountain & Frisby Ridge, plus a BC Snowmobile Federation Membership and SnowRiders Magazine Subscription.

PRESEASON (until Nov 30)

Primary Adult	\$225
Sec. Adult	\$175
Youth (under 16)	\$50
Senior (65+)	\$75
Non-Rider	\$25

REGULAR (after Dec 1)

Primary Adult	\$250
Sec. Adult	\$200
Youth (under 16)	\$50
Senior (65+)	\$75
Non-Rider	\$25

Visit sledrevelstoke.com for updates and daily rates

OUR TEAM

Our team is inspired to provide the best experience to our Members and visiting riders from the moment they drive into the parking lot, to the moment they leave.

The Club's team is small and mighty, consisting of 20 hardworking, snow-loving individuals. Visitors may recognize established team members, like Dave who's been behind the Frisby Booth for almost 15 years; or Ron who dutifully minds the West Entrance, eager to share a story or two. Meanwhile, new staff additions spark waves of change, guiding the Club towards its potential at full speed. From checking day passes to checking invoices, all our staff share a passion for snowmobiling just like you. If you see them around in bright orange jackets, don't be afraid to say hello.

Our Directors

Directors are volunteer positions, elected each year making fiscally responsible decisions on behalf of Club members. The current Directors are: Lorne Alcock (President) , Guylaine St Gelais (Vice President) Lionel Birchenbach, (Treasurer), Brianna Lukkar (Secretary), Brad McStay, Bryan Bates, Cody Younker, Jack McKay, Joe Lammers, Rob Alford, Ron LaRoy.



We take our grooming very seriously

Boulder & Frisby trails are groomed seven nights a week and also Friday and Saturday afternoons - conditions dependent. A daily grooming report can be viewed online at sledrevelstoke.com/grooming-reports

Snowmobile trail groomers are the unsung heroes of our sport. They are the ones that do the most for our trails. If you see them, give them a thumbs up. Please do not pass the groomer until the operator has come to a complete stop and has signaled it is safe to pass.

Warm temperatures + grooming = mash potatoes?!

Despite the grooming teams best efforts, you simply can't control the weather. Our groomer operator Homer says warm temperatures turn the snow to "mashed potatoes". If you notice large snowballs on the side of the trails, take care through these zones by keeping a steady throttle as to avoid uneven wear on trails. We are all excited to find deep powder but if you speed through the groomed trails on the way up, you're left with a bumpy trail when it's time to go home.

Never miss an update



@Revelstoke.Snowmobile.Club



@RevelstokeSnowmobileClub



Revelstoke Snowmobile Club

Yamacam



Yamacam is your eyes on the ground. View the live webcam at sledrevelstoke.com/media



ACCOMMODATION

Find the perfect place to rest your head. From downtown hotel locations to sled in/out guesthouses and cabins, there is an accommodation option for every visitor's needs.



Revelstoke Accommodations,
Food/Beverages & Spa Treatments
All in one location



For Sledder Rates Call
1.855.837.3320
www.hillcresthotel.com



INDOOR POOL, WATERSLIDE & HOT TUB

250.837.4741

On Trans-Canada Highway 1
near Glacier National Park & Mount Revelstoke

www.ramada.com | Revelstoke, BC

RAMADA.



p. 250 837 2176
e. info@peakslodge.com

Sled In / Out
Premium Fuel
Secure Storage
Compound
Group Suits
Drying Room
Hot Tubs, Sauna
& Sled Rentals
+
Smoked BBQ
Packed Lunches
Cookercan Meals

www.peakslodge.com

BOULDER MOUNTAIN RESORT

CABINS - RV SITES - TENTING - SLEDDING - GLAMPING



CABINS
FULLY EQUIPPED KITCHENS



24/7 ACCESS
SNOWMOBILE IN/OUT



DRY ROOM



HOTUB ACCESS



THE GARAGE
HEATED HANGOUT

- LIFTS & AIR TOOLS
- DRYING EQUIPMENT
- COUCHES, TV, MUSIC



GRAB N GO
NEW CONVENIENT PANTRY



FREE SHUTTLE
RUNS TWICE A DAY

250.837.4420

WWW.BOULDERMOUNTAINRESORT.CA

3069 TRANS-CANADA HWY
REVELSTOKE, BC



GLACIER HOUSE RESORT

Group cabins with Private Hot Tubs
Sled in Access
Frisby & Boulder at your Doorstep
Hot Breakfast Buffet
Indoor Pool, Hot Tub and Sauna

250.837.9594
glacierhouse.com



Get 35% off
the Standard Rate & More

Ask for our **'SLEDDERS'** Rate

Sandman
HOTEL | REVELSTOKE

1901 Laforme Blvd | Revelstoke BC
250.837.5271 | sandman.ca

DINING



Wondering where to re-fuel after a big day? There's no shortage of restaurants, pubs, and bars in Revelstoke. Whether you're looking to sit down to a traditional meal, enjoy a casual burger and beer, or unwind by a fireplace, you're sure to find a place to satisfy your cravings.

Zalas
*Steak & Pizza
Bar & Grill*
www.zalasrestaurant.ca

Reservations & Pick-up
250-837-5555

Zala's **courtesy** limousine service is available to and from Zala's Restaurant.

EST. 2019
BOOTLEGGER
PUBLIC HOUSE

OPEN EVERY DAY 4-11PM
GLACIER HOUSE RESORT
(250) 837-9594

Mt. Begbie
BREWING CO.
REVELSTOKE, BC

CRAFT BREWED IN
REVELSTOKE, BC
SINCE 1996

proud supporter of the Revelstoke Snowmobile Club

Mon-Sat 11.30am-9:00pm (closed stat holidays)
BREWERY TOURS | TASTING ROOM | RETAIL | GROWLER FILLS
2155 Oak Drive www.mt-begbie.com 250.637.2756

REVELSTOKE, BC
19 75
BIG EDDY PUB & LIQUOR STORE

2108 Big Eddy Rd
Pub **250.814.0095**
Liquor Store **250.837.0096**
bigeddypub.com

Village Idiot Bar & Grill
REVELSTOKE B.C.

306 Mackenzie Ave
Restaurant **250-837-6240**
Delivery **250-837-6250**
villageidiot.ca

WE DELIVER

Chubby Funsters
REVELSTOKE B.C.
- KITCHEN + COCKTAILS -

114 Mackenzie Ave
250.837.2014
chubbyfunsters.com

THE BEST SELECTION IN TOWN

Open Daily 9AM -11PM
250.837.4450
cheersliquor.ca

WE DELIVER To Your Door 3:30PM - 11PM

ICE COLD BEER, LIQUOR, BC WINE & CRAFT CIDER

Two convenient locations
109 Victoria Rd | 1925 Laforme Blvd

ONE TWELVE
112
RESTAURANT

250.837.2107
112 First St East
Open daily from 5:30pm

112RESTAURANT.CA

BURGERS SINCE 1932

R
RIVER CITY PUB

LOCATED IN THE REGENT HOTEL

RIVERCITYPUB.CA

PARTS GEAR RENTALS & GUIDED TOURS

Photo credit: Teena Rumak

Machine not performing up to par? Left your gloves on the sled deck? Maybe you are looking for a pro to show you where to go. Whatever your snowmobiling needs are, these local businesses have got you covered.



Full Speed RENTALS **ONE STOP SLED SHOP**

Huge Inventory of Parts Helping to Get You Out & Riding the Next Day

All New 2021 Ski-Doo, Polaris & Yamaha Sleds for Rent Including Turbo and Expert Units

3km West of Boulder Mountain Turn Off on the Trans Canada Highway

250-837-8883
fullspeedrentals.com

Authorized Ski-Doo Service Center



Revelstoke, BC, Canada

GREAT CANADIAN TOURS

MORE THAN 22 YEARS EXPERIENCE

LARGEST TENURE IN NORTH AMERICA

FULL EQUIPPED TOURS FOR ALL ABILITIES

RIDEREVELSTOKE.CA
250-837-5030

YOUR ONE STOP SHOP FOR RIDING IN CANADA'S POWDER CAPITAL



INFINITE
POWERSPORTS

SERVICE – PARTS – ACCESSORIES
FOR ALL MAKES AND MODELS
STOCK TURBO MOD
OUR CUSTOMER SERVICE IS SECOND TO NONE!

250.837.2027

64 WESTSIDE ROAD REVELSTOKE

WWW.INFINITEPOWERSPORTS.COM

SLEDRENT.CA

rent the perfect day



250.837.1789

LOCATED AT INFINITE POWERSPORTS



PERFORMANCE IS OUR THING

www.thesledshed.net

250-814-0018

REVELSTOKE B.C. CANADA



**Selkirk Mountain
Helicopters Ltd.**

Sleds Do Fly
Revelstoke BC

250-837-2455

For sled recoveries call or
go to
smheli.com/recovery



MOUNTAIN ADVENTURES

EST. 2019



**SLED RENTALS,
GEAR RENTALS,
ACCOMMODATIONS
AND MUCH MORE!**

731 HAINES RD. REVELSTOKE. CANADA

(250) 683-2727

WWW.STOKEDMOUNTAINADVENTURES.COM

PARTS, GEAR, RENTALS & GUIDED TOURS

MANUFACTURERS



Photo credit: unknown

Taking on the elements is no easy task. Make sure you have the right equipment to face the challenge.

PRINOTH TRAIL GROOMING
TAME THE TRAIL

Prinoth

2021 MOUNTAIN MAX LE 154
Lay the first tracks.

SNOW

YAMAHA
Revs Your Heart

YAMAHA-MOTOR.CA
Discover More Yamaha - Genuine Parts & Accessories, Service and Finance

TOBE
CHOOSE YOUR PATH

TOBEOUTERWEAR.COM

YOUR *ski-doo*[®] DEALER

BANNER RECREATION & MARINE

MANUFACTURERS

SAVANNA RENNIE



KELOWNA • VERNON • GOLDEN • LETHBRIDGE

CARIBOU

CARIBOU CLOSURES ARE IN EFFECT
FROM JANUARY 1 TO APRIL 15



About Mountain Caribou

Mountain Caribou are a globally unique and endangered variety of woodland caribou that has adapted to the special conditions in BC. In winter - when food is buried - they migrate to the high alpine to feed on tree lichens. The Clubs involvement with mountain caribou recovery dates back almost four decades. Beginning in the mid 1980s, the Club has been on the forefront of local caribou recovery initiatives.

Our commitment

The Club has a Stewardship Management Agreement with the Ministry of Environment demonstrating our commitment to the preservation of wildlife. Volunteers patrol the Frisby Ridge caribou closure reporting wildlife tracks and sightings. Club members actively participate by raising awareness, sharing information and protecting caribou habitat. The Club purchased, installed, and continues to maintain the closure boundary signs.

To learn more visit sledrevelstoke.com/wildlife



Photo credit: Patrick Winslow

RATING GUIDE

Find the perfect terrain to rip through this season

BEGINNER

- Family friendly
- Groomed trail system
- Emergency shelter cabin
- No avalanche exposure

INTERMEDIATE

- Intermediate riding ability
- Knowledge of navigating avalanche terrain
- Proper use of backcountry safety equipment
- Recommended AST-1 (minimum)

ADVANCED

- Expert technical riding ability
- Knowledge of safe complex terrain travel
- Proper use of backcountry safety equipment
- Recommended AST-2 (minimum)

EVENTS

Mark these dates and come join the fun



AVALANCHE AWARENESS DAY

Sat 16th Jan 2020
from 9am

Do you have the tools to ensure that you and your crew make it home safe? Improve your mountain knowledge with local pros and experienced sledders.



FAMILY DAY 7TH ANNUAL

Sat 13th Feb 2021
from 10am

Fun for the entire family. Local experts will teach our future shredders about mountain safety and best practices. Gift bags for youth participants will help to start their own safety kits.



VINTAGE RIDE

Sat 6th Mar 2021
from 10am

Shine up those vintage sleds and join us for a day on Boulder. A freshly groomed trail, oval track and drag strip in the meadows will be ready for those that want to test their sled's horsepower.

RIDING AREAS

REVELSTOKE THE EPICENTRE OF
MOUNTAIN SLEDDING

sledrevelstoke.com/ridingareas



SNOWMOBILER CODE OF ETHICS

As a responsible snowmobiler I will:

- ride in a manner that is a credit to our recreation
- influence other snowmobilers to adhere to this Code of Ethics
- respect the rights of others, including property owners and other outdoor enthusiasts.
- protect and preserve our natural environment.
- ride in a responsible manner.
- not harass or harm wildlife or the natural surroundings
- minimize my impact on the environment.
- ride smart, be prepared, and stay in control
- check ice and weather conditions before riding
- help those in distress
- obey all laws and rules governing our recreation
- promote proper snowmobile education and training
- practice Zero Tolerance with respect to impaired riding

I understand and accept the risks associated with snowmobiling and I will take responsibility for my own actions.



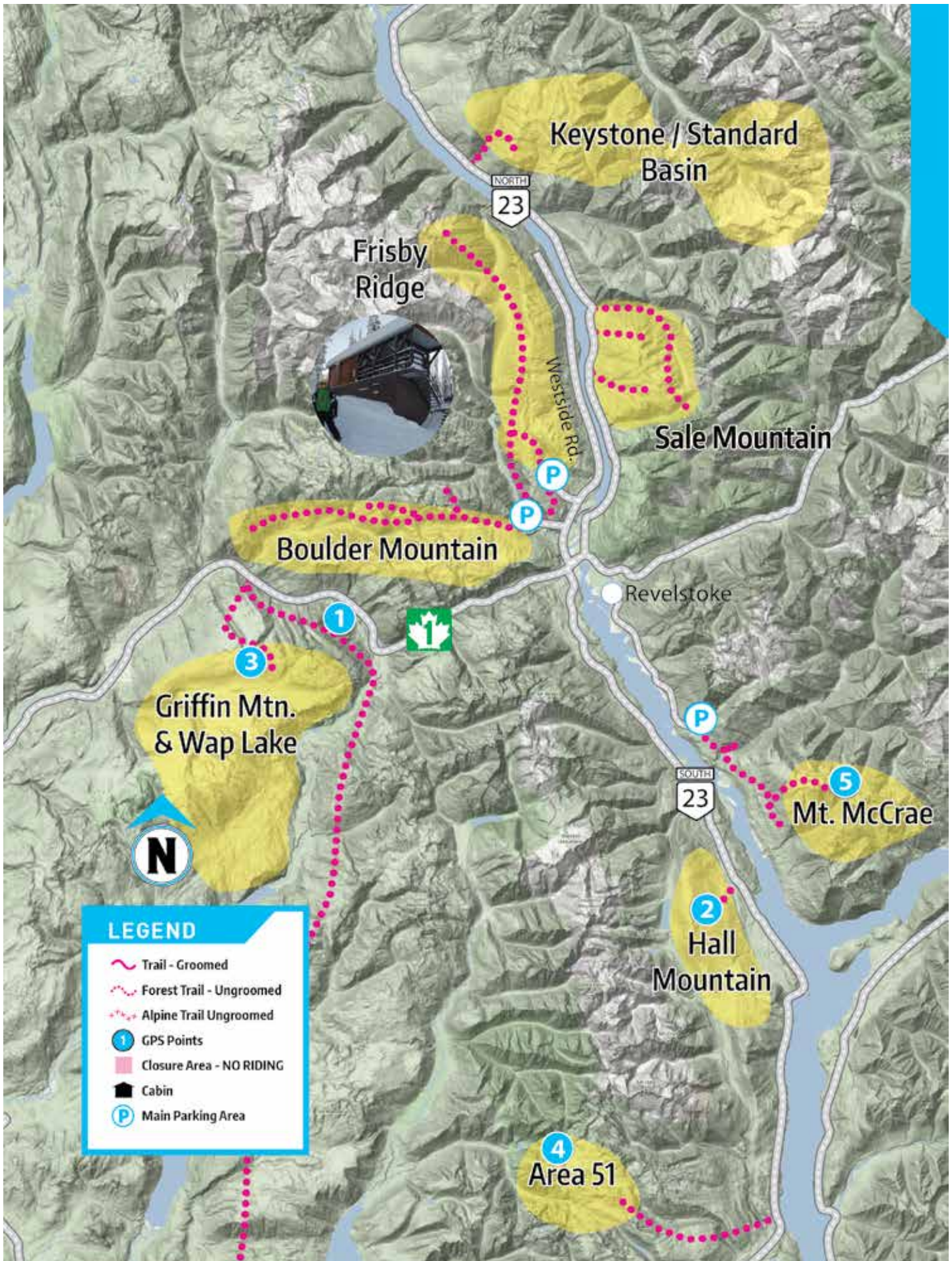
CANADIAN COUNCIL OF
SNOWMOBILE ORGANIZATIONS

Photo credit: Teena Rumak



AREA OVERVIEW

AREA OVERVIEW



BOULDER MOUNTAIN

BOULDER MOUNTAIN



RATING: BEGINNER-ADV

Boulder is one of Revelstoke's premier riding areas. It offers terrain for all riding abilities from open meadows to technical tree riding and chute climbing. The main staging area is located at 4177 Westside Road.

Stop in at the Welcome Centre. Our parking staff will guide you to the best parking location based on your rig size. The West Boulder Trail head, off Highway 1, does not have a parking, however guests staying at the West end of town can ride right from their doors.

Stop in at Boulder Cabin located at the end of Kirkup and Veideman trails.

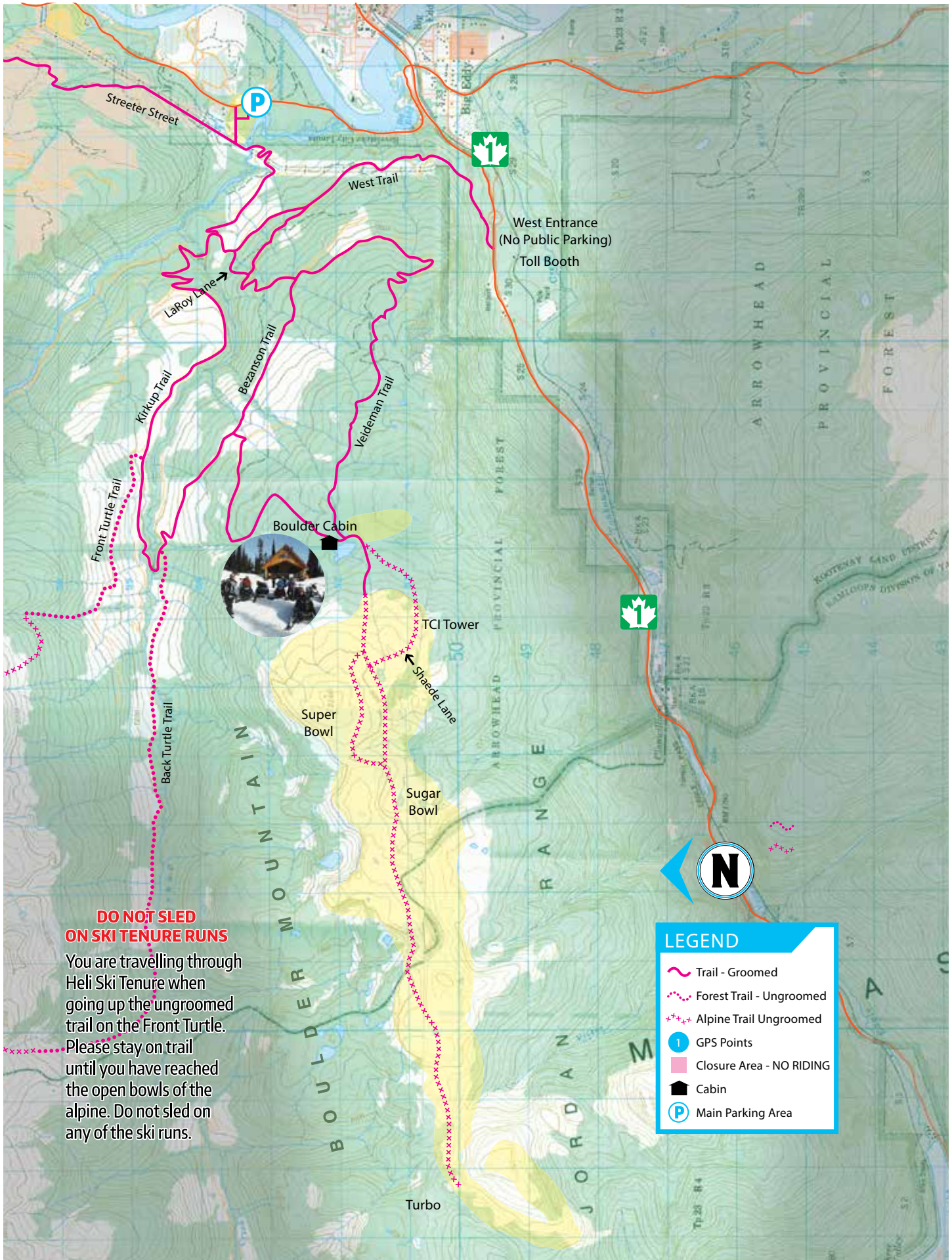
GPS Coordinates

Boulder Cabin	51°00'46"N	118°19'35"W
Super Bowl	51°00'19"N	118°22'01"W
Sugar Bowl	51°00'11"N	118°22'34"W



BOULDER MOUNTAIN

BOULDER MOUNTAIN



DO NOT SLED ON SKI TENURE RUNS

You are travelling through Heli Ski Tenure when going up the ungroomed trail on the Front Turtle.

Please stay on trail until you have reached the open bowls of the alpine. Do not sled on any of the ski runs.

LOWER FRISBY RIDGE

LOWER FRISBY RIDGE

RATING:

BEGINNER-ADV

Frisby Ridge is another of Revelstoke's premier riding areas. This is a great mountain that offers family to expert riding, trees areas to open meadows.

The main staging area is located the end of Westside Road, under the transmission power lines. You can ride over from the Boulder staging area on the Streeter Street trail, which is the connector for Boulder and Frisby Mountains.

Sign in at Feldinger Hut before heading out into the ridge. Altitude: 4500-600ft

GPS Coordinates

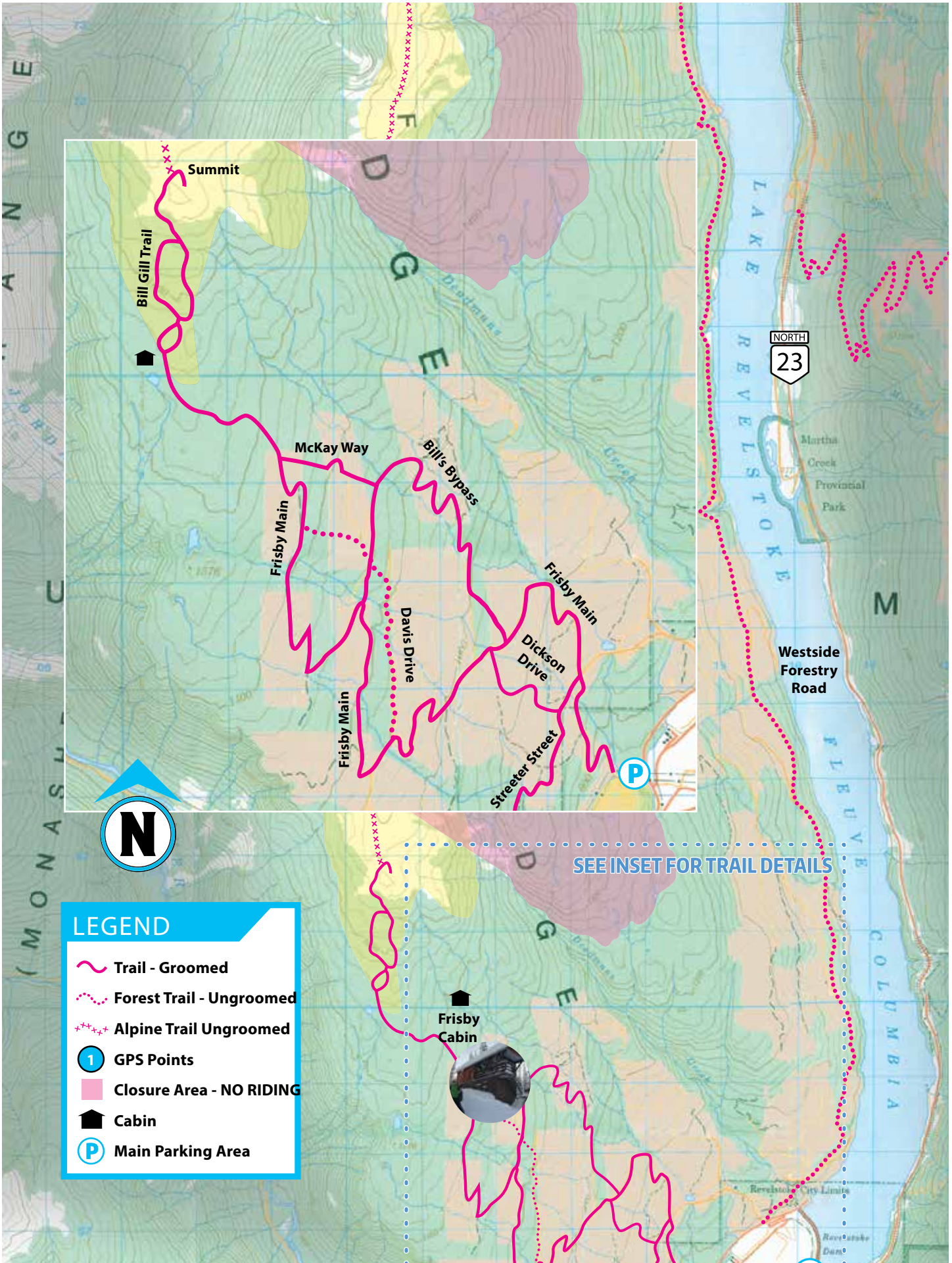
Frisby Cabin

51°05'02"N 118°16'47"W



LOWER FRISBY RIDGE

LOWER FRISBY RIDGE



SEE INSET FOR TRAIL DETAILS

LEGEND

- Trail - Groomed
- Forest Trail - Ungroomed
- Alpine Trail Ungroomed
- GPS Points
- Closure Area - NO RIDING
- Cabin
- Main Parking Area

RECOMMENDED FOR SNOWMOBILING IN REVELSTOKE

You are in the backcountry:

- Turn on your transceiver/ beacon
- Have a trip planned and tell someone you trust
 - How many people in your crew
 - Where you are going
 - What radio channel you are using
 - Expected return time
- Check avalanche bulletins at avalanche.ca
- Check the weather forecast
- Do not consume alcohol or drugs whilst riding
- Slow down and ride trails at consistent speed
- Respect wildlife closures

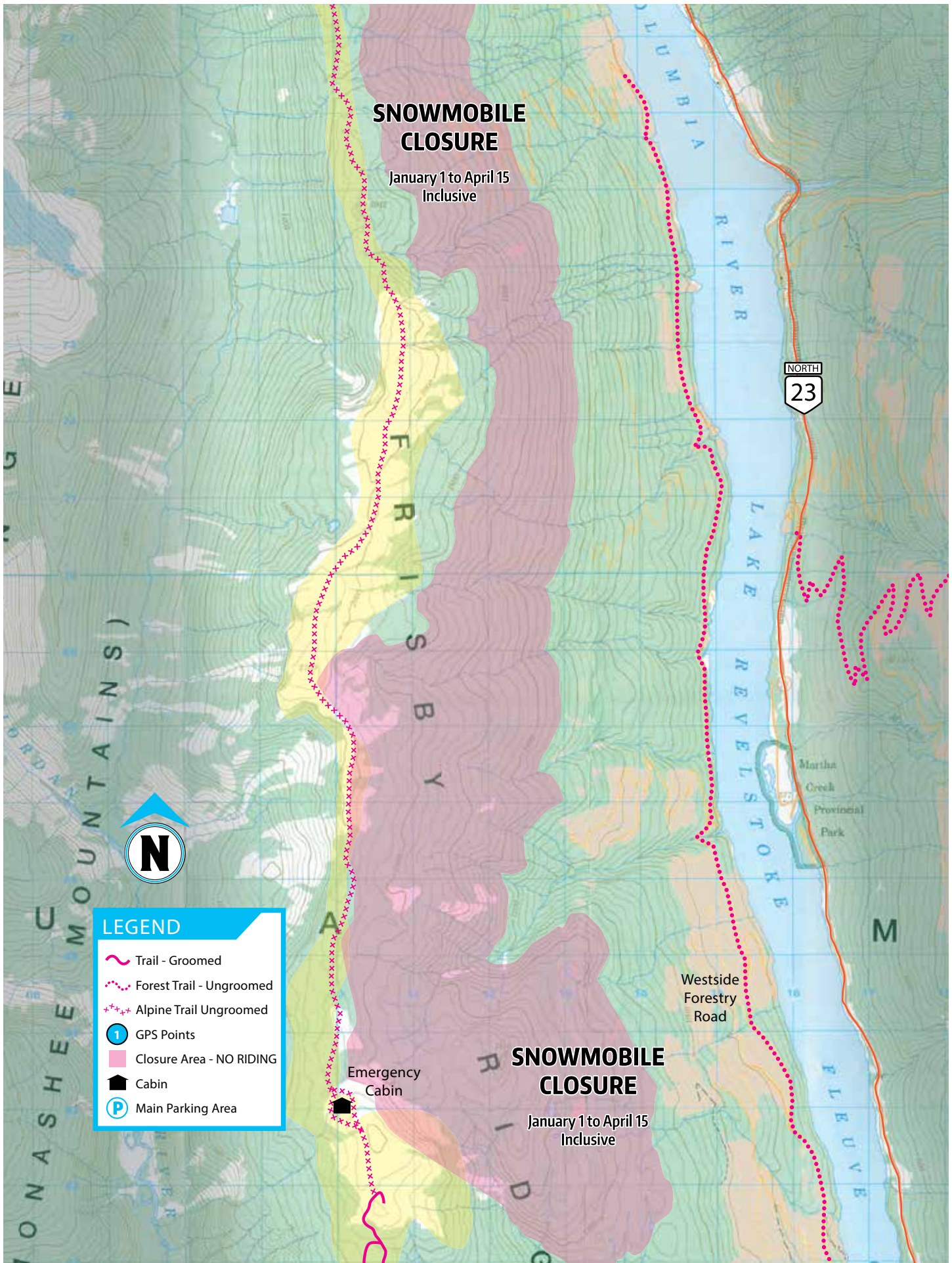
Items to carry on you:

- Avalanche Transceiver (beacon), Shovel, Probe
- Avalanche Airbag
- First Aid Kit
- Two-way radio
- Satellite communication device
- GPS device, GPS phone app, or compass
- Extra food & water
- Extra clothing
- Headlamp/flashlight
- Pocket knife and saw
- Spare goggles & gloves
- Hat/toque/balaclava
- Fire making kit
- Survival kit
- Tool kit, spare belt, extra key
- Tow strap, nylon cord (10cm)
- Whistle, mirror or signal flare



UPPER FRISBY RIDGE

UPPER FRISBY RIDGE



SALE MOUNTAIN

SALE MOUNTAIN

RATING: INTERMEDIATE-ADV

Sale is a local's favourite as it is only 18 km North of Revelstoke on Highway 23 and offers some great riding. Parking is extremely limited, so please use caution. A forest service road leads to top of the mountain which allows for early and late access to the alpine. The BC Hydro communication tower at the top is private property. We ask that you do not trespass. Alpine meadows and steep tree riding offer something for everyone that chooses to make their way up the 15 km long and very bumpy ungroomed trail. Sale also has a small forest fire burned area which is a treat to explore.

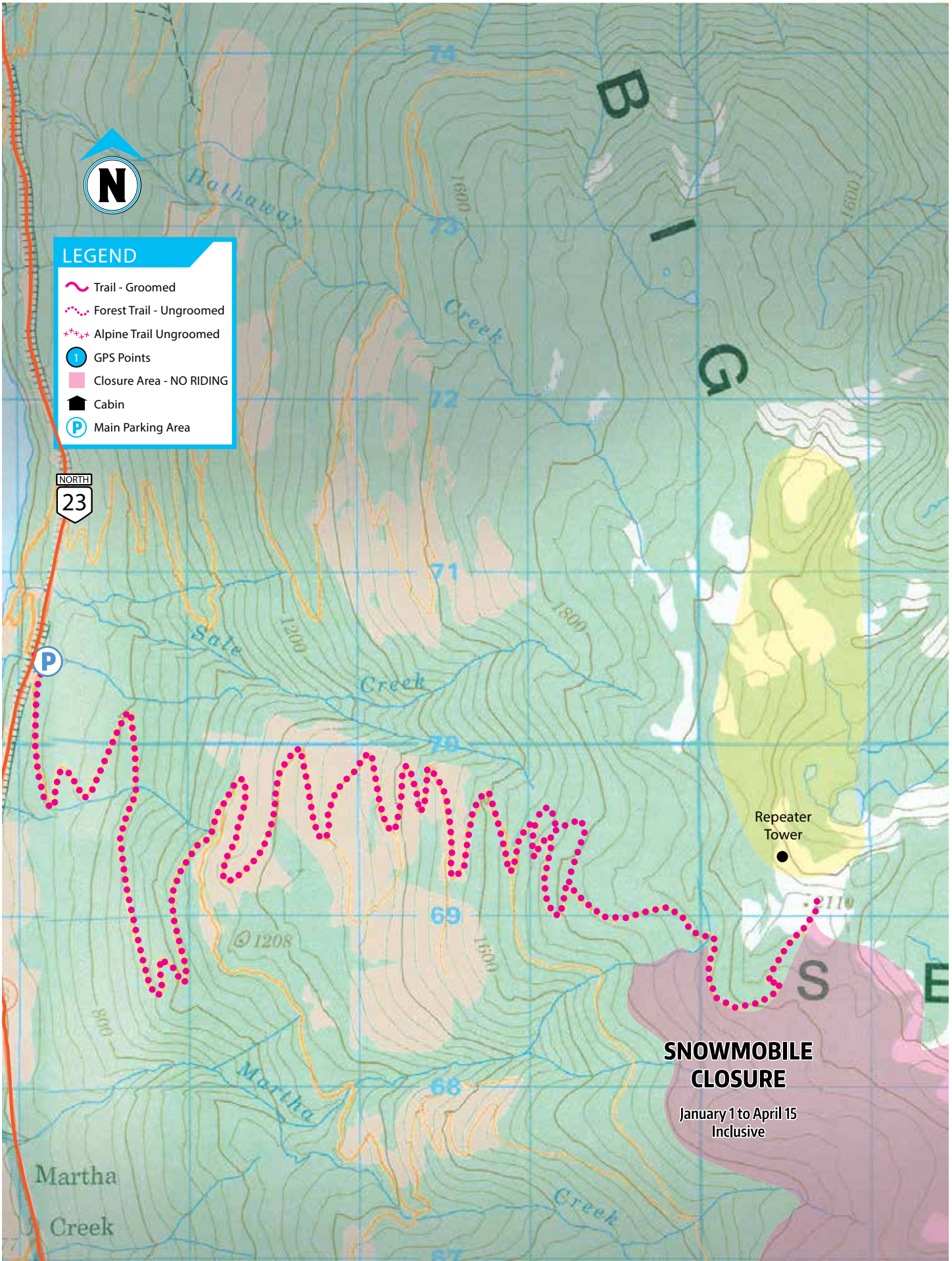
Mt Revelstoke & Glacier National parks

This riding area also borders Mount Revelstoke National Park. Off road motorized vehicles are strictly prohibited in National Parks. Please respect the signs.

Respect the seasonal snowmobile caribou closures from Jan 1 to April 15 inclusive.



SALE MOUNTAIN



KEYSTONE & CARIBOU BASIN

KEYSTONE BASIN



Photo credit: Teena Rumak

RATING:

ADVANCED

Keystone is another popular riding area located 52 kms North of Revelstoke on Highway 23. Parking is extremely limited. Vast rolling meadows and large rugged terrain makes Keystone a favorite to explore. This high alpine country is best suited for advanced riders due to the complex avalanche terrain that must be navigated. It is a remote area, so prepare accordingly. The trail is not groomed.

Respect the seasonal snowmobile caribou closures from Jan 1 to April 15 inclusive.

Be sure to check in at the Keystone Cabin if you can find it.



CARIBOU BASIN



RATING:

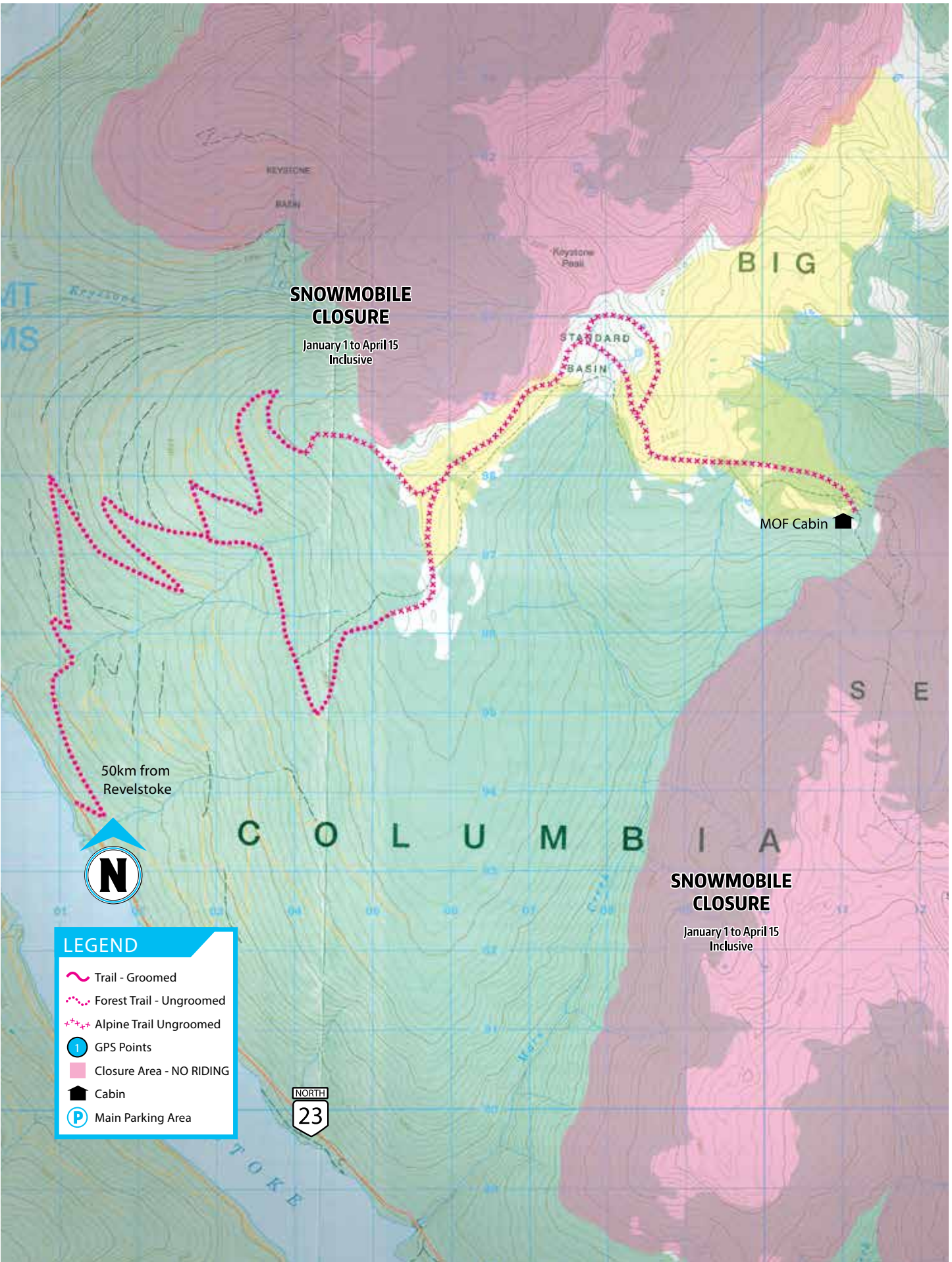
ADVANCED

Caribou Basin is a beautiful ride located approximately 108 km north of Revelstoke on Highway 23. This is our furthest most riding area but well worth the drive. Great tree riding leads to two massive bowls. Caribou Basin is best suited for advanced riders as extreme avalanche hazards must be navigated.

Caribou closures affect the entire riding area from Jan 1 to April 15 inclusive.

KEYSTONE & CARIBOU BASIN

KEYSTONE & CARIBOU BASIN



SOUTH AREA OVERVIEW



WAP LAKE ROAD

ADVANCED

The Wap Lake area provides access to 150 kms of ungroomed logging roads which lead through the scenic Monashee Mountains. Watch out for the moose and please maintain even speeds to save the trails. You can access to Griffin, Joss and Mt Begbie alpine areas from Wap Lake Rd.



HALL MOUNTAIN

INT-ADV

There is a little something for everyone at Hall Mountain. A large network of old forest service roads is a fun way to wrap your way around the mountain into the alpine. Alternatively, tight tree riding challenges those that want a quicker way to the top. Great for those Revelstoke socked in days.



GRIFFIN

INT-ADV

Griffin is a great ride when the weather gets clouded in. The ungroomed trail leads to the upper cut blocks then through the trees into the alpine. Some of our best tree riding happens on Griffin. This is an easier ride later in the season. Be careful: new cut blocks have increased the avalanche risk on the trail in.



AREA 51

ADVANCED

Located south of Revelstoke. Parking is limited. The long, ungroomed trail in leads you to beautiful alpine riding. Be aware of the Monashee Provincial Park Boundary and respectful of the backcountry ski touring tenure that is in the area.



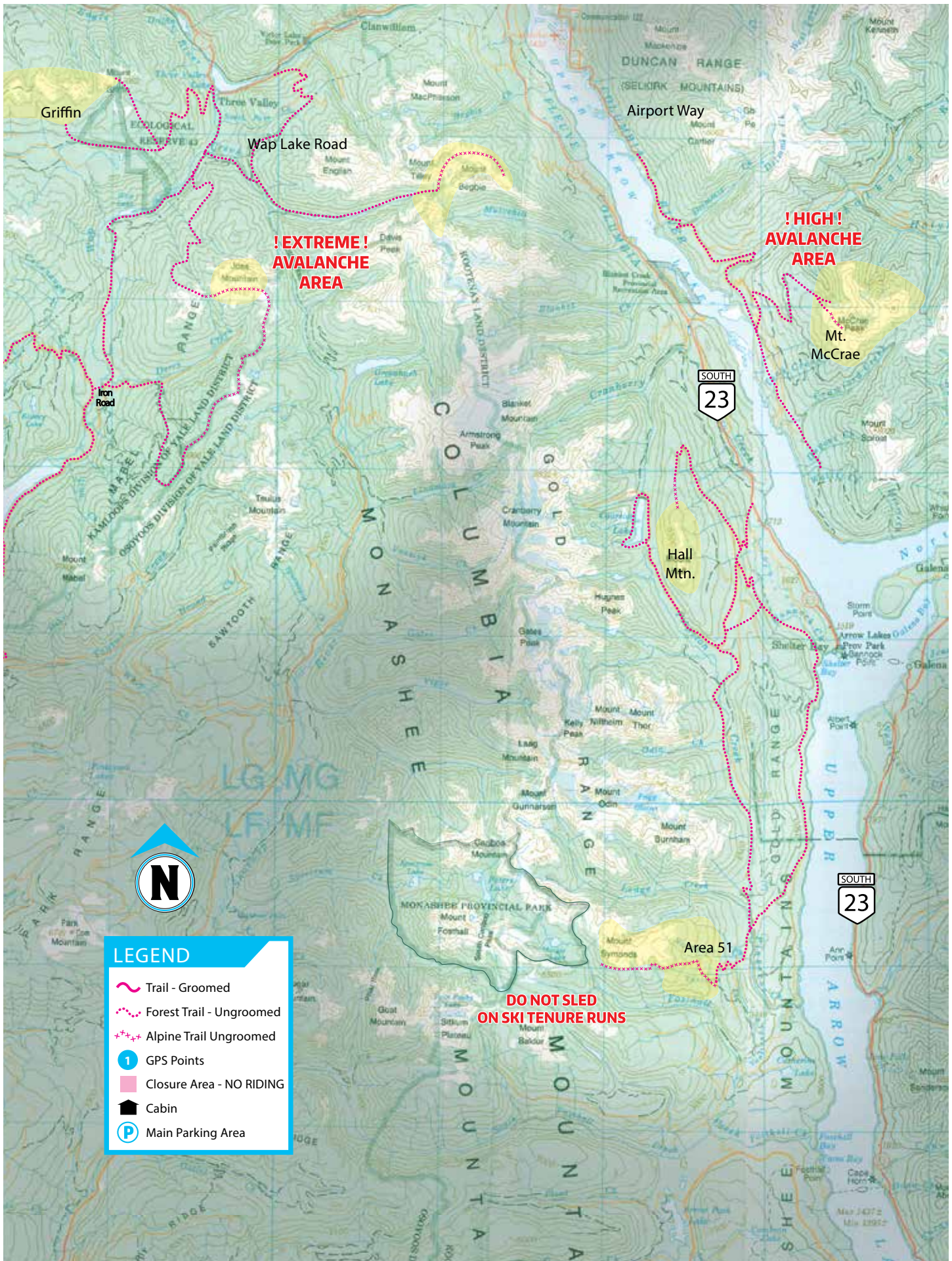
MT. MCCRAE

ADVANCED








Follow Airport Way south, on the east side of the Columbia River, to the end of the road until it is no longer plowed. Unload for some great riding on 75 km of roads which go on forever. Due to its high avalanche risk, this area is best suited to advanced riders.

SOUTH AREA OVERVIEW

SOUTH AREA OVERVIEW



LEGEND

-  Trail - Groomed
-  Forest Trail - Ungroomed
-  Alpine Trail Ungroomed
-  GPS Points
-  Closure Area - NO RIDING
-  Cabin
-  Main Parking Area

We asked you for your best Revy Sled Club photos. Our favorites showcase what we love most about snowmobiling in Revelstoke: deep powder, incredible panoramas and unforgettable experiences with friends.

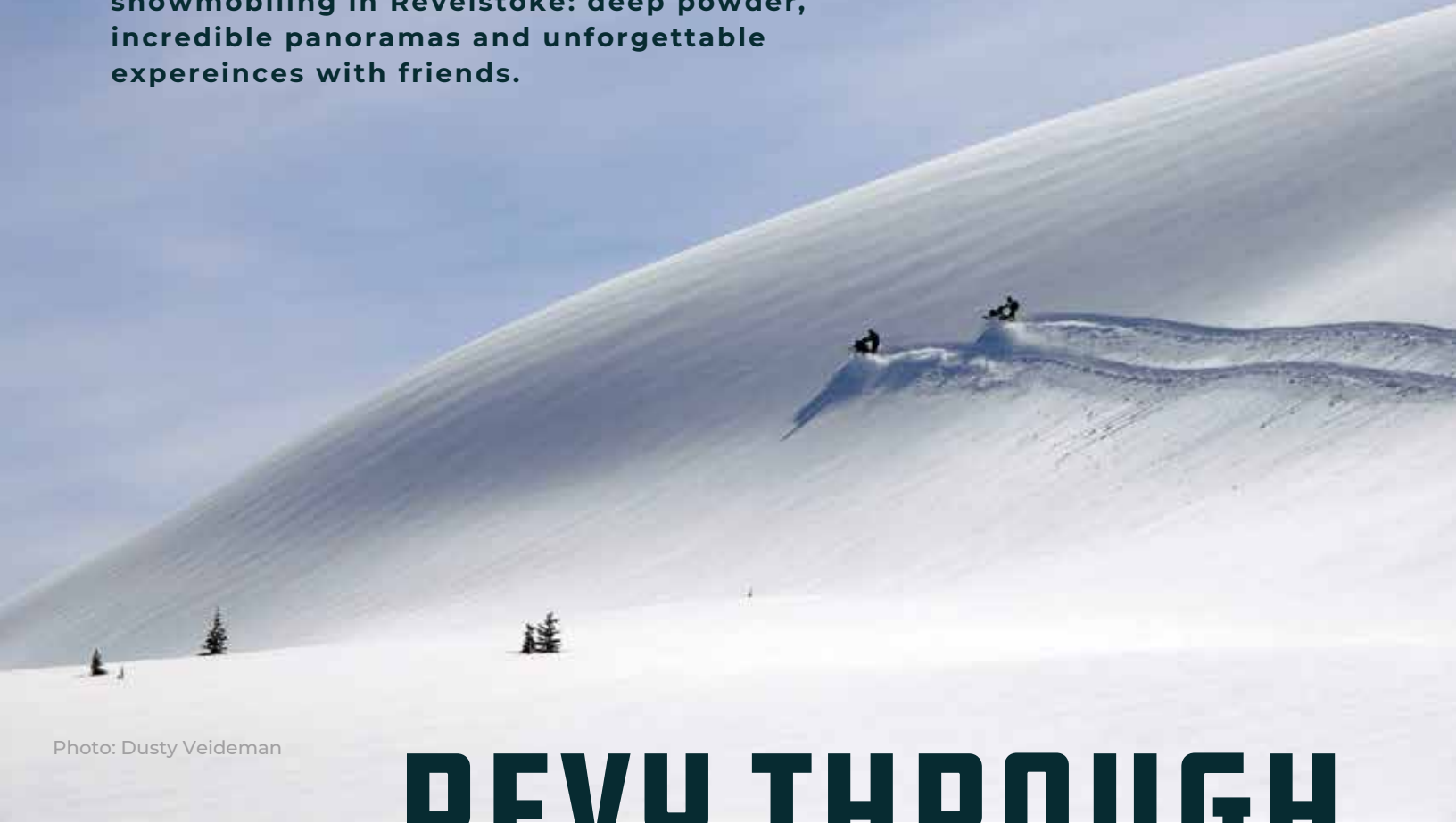


Photo: Dusty Veideman

REVV THROUGH



Photo: @patrick_8300

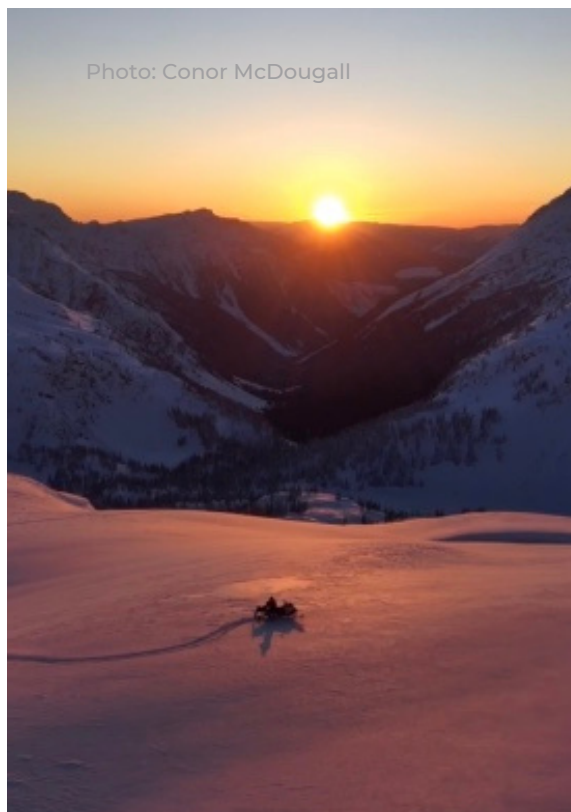


Photo: Conor McDougall



Photo: @jasonmcmurray



Photo: Hans Eggink

YOUR EYES



Photo: @bguy05



Photo: Max Michel

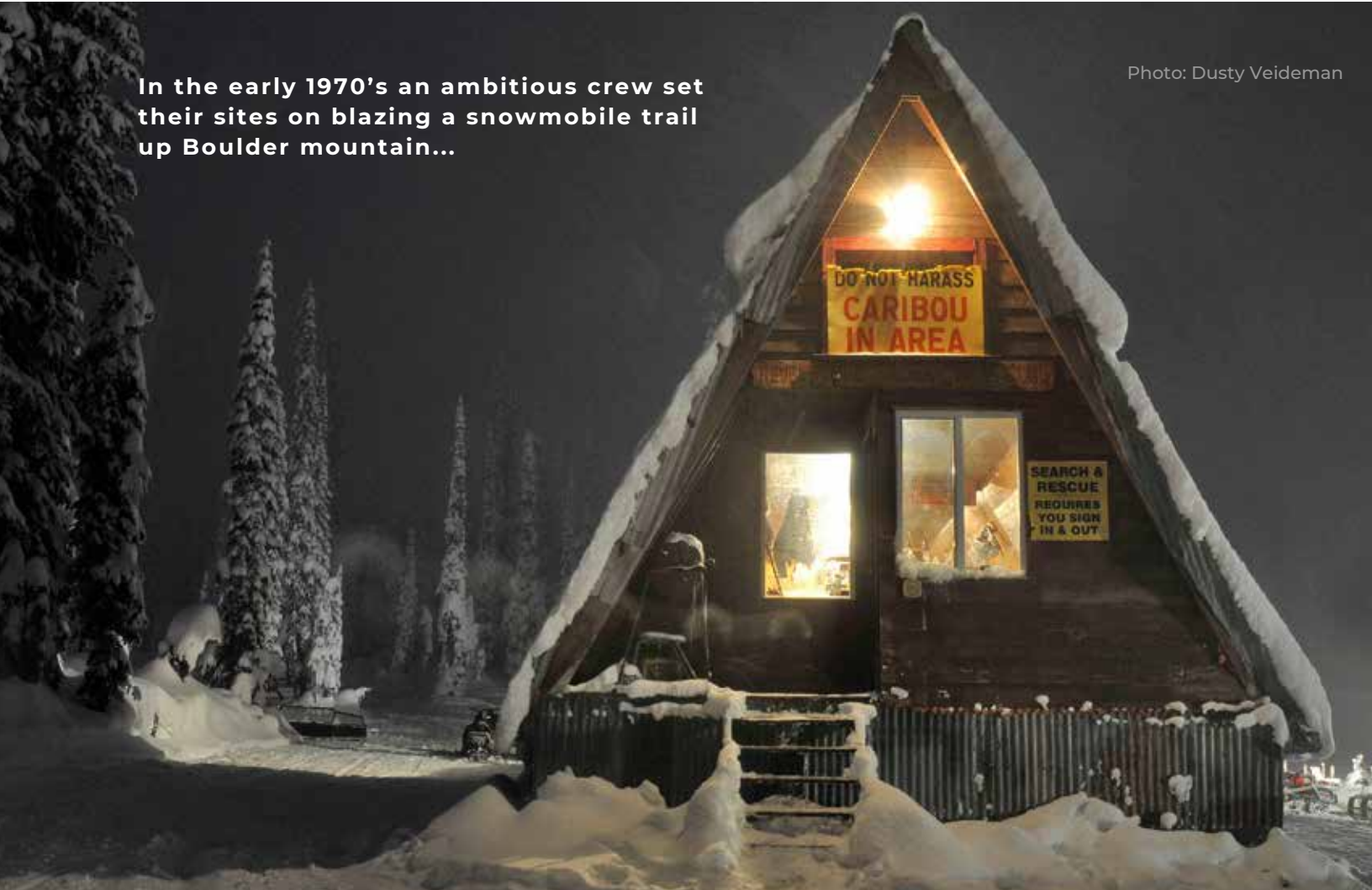


Photo: @jasonmcmurray

THE BOULDER

In the early 1970's an ambitious crew set their sites on blazing a snowmobile trail up Boulder mountain...

Photo: Dusty Veideman



5 facts about the old Boulder Cabin

Access to Boulder first presented itself when Revelstoke Cable TV pushed an access road up to their antenna. Even with an open trail, it was a three day mission to reach the location where the Boulder Cabin sits today. Cabin construction was finished in 1976, built by 100% volunteer labour. The original outhouse, which still stands, was built during the mid 70s. For 10 years 'Herbie burgers' were deliciously enjoyed by sledders of all ages. Pieces of the old cabin can be found in the new cabin, like the 'Welcome Revelstoke Snowmobile Club' that is hung over the door.

CABIN

After a few years of exploring the vastness of Boulder, the potential for unlimited snowmobile adventures was apparent and our founding Club members decided a cabin should be built.

The original cabin was designed by Bill Gill (Pres. 1977). Bill's inspiration came from an A-frame cabin he saw during a fishing trip to Trout Lake. He knew it was the perfect design to withstand Boulder's snow load, but it would need to be built 10 feet off the ground.

There was huge community support to build the cabin with most of the materials and labour being donated. CPR supplied treated timbers. Downie Street sawmill supplied the 2 x 12 lumber to the build frame. BC Hydro was building a power line over the mountain through 3 Valley to Enderby and would fly the cabin materials up in between cable flights.

Club members were busy scrounging up other materials. The old skating rink roof was built with corrugated steel. The rink was torn down, and the scrap metal was being stored at a City stock yard. When asked, the city happily said, "take all you want". The steel was perfect because it needed to protect the building from porcupines.





Club Contact Information

Box 1849, Revelstoke, BC V0E 2S0

250-837-3325

revsnowmobileclub@gmail.com

Emergency Contact Numbers

Call 911 in case of emergency

Avalanche Bulletins: avalanche.ca

Road Conditions: drivebc.com

Selkirk Mountain Heli: 250-837-2455

sledrevelstoke.com