

SPONSOR THE MOST RENOWNED SNOWMOBILE  
CLUB IN THE WORLD



**CORPORATE  
SPONSORSHIP**

## Revelstoke is the epicentre of mountain sledding.

Established in 1968, Revelstoke Snowmobile Club is the heart of the snowmobile tourism industry in Revelstoke, BC. Our not-for-profit club maintains 150 KM of trails on Boulder Mountain and Frisby Ridge and hosts over 30,000 snowmobilers each year. Snowmobilers come from all over the world to ride the deep powder and vast terrain.

To better add value for our corporate partners, the Club is continuing to refine our corporate sponsorship and advertising products. Flexible marketing options allow your organization to purchase advertising based on your business' objectives and budget.

## Become a Corporate Sponsor

We are offering three options for the 2022-2023 season:

1. Sledder Guide Magazine 2022 [Download the Sledder Guide](#)
2. Website Ad <https://sledrevelstoke.com/sledder-guide/>
3. Parking Lot Sign

**Bundle and save.** New for this year add on additional advertising options for \$100/each.

		Print	Website	Sign*	Total
<b>Sledder Guide Magazine</b>	<b>Full page</b>	<b>\$3,000</b>	\$100	\$100	<b>\$3,200</b>
	<b>1/2 page</b>	<b>\$1,750</b>	\$100	\$100	<b>\$1,950</b>
	<b>1/4 page</b>	<b>\$1,000</b>	\$100	\$100	<b>\$1,200</b>
	<b>1/8 page</b>	<b>\$550</b>	\$100	\$100	<b>\$750</b>
<b>Website Ad</b>			<b>\$350</b>	\$100	<b>\$450</b>
<b>Parking Lot Sign*</b>				<b>\$200</b>	<b>\$200</b>

\* Rate per space. Sign production fee paid directly to Signs Ink - Revelstoke.

*All fees include tax*

Erin Mallas- Interim Manager

[revsnowmobileclub@gmail.com](mailto:revsnowmobileclub@gmail.com)

250-814-4664

## COMMUNITY



12,000  
followers

+114% than last season



3,000,000  
impressions

since Jan 2021



16,300  
FB likes

+17% than last season

## WEBSITE



159,000  
website sessions

+23% than last season

Sep 2020 to April 2021



2,900  
Sledder Guide  
page views

+800% than last season



2 min  
average time  
on page

## VISITORS



814  
Club members

+2% than last season



31,250  
total riders

+11% than last season



44% AB  
18% SK  
15% BC  
4% Revy

where our riders come from

## PRINT MAGAZINE



4,000  
copies  
annually



design  
improved  
in 2020



21  
businesses  
advertised

## Corporate Sponsor Benefits

As a corporate sponsor of the Club there are benefits received at no additional cost.

### **RSC Welcome Centre**

Located at the base of Boulder Mountain, the Club's Welcome Centre is open from October to April offering snowmobilers a convenient place to learn about snowmobiling in Revelstoke and how to make their trip special.

### **Newsletter**

The newsletter provides insights into visitation statistics, upcoming events, and event sponsorship opportunities.

### **Events Calendar**

The Club's webpage allows corporate partners to include events in the event calendar.

<https://sledrevelstoke.com/calendar/>

## SLEDDER GUIDE magazine

**Deadline for artwork: October 15, 2022**

Our new Sledder Guide magazine format focuses on the member and visitor experience. Fresh content for the 2022-2023 content includes Club history, safety messaging, wildlife best practices and much more.

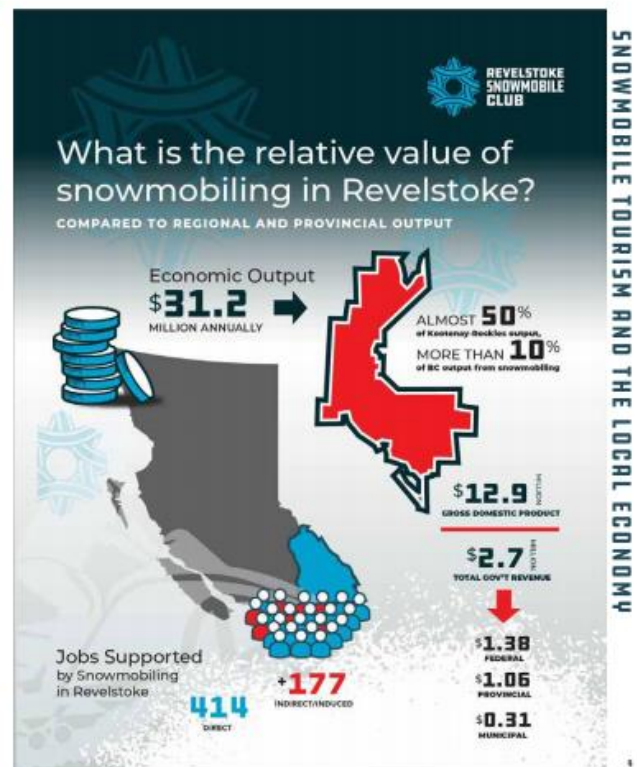
Ad space is limited to one per Corporate Sponsor on a first come first serve basis

### 2022-2023 Pricing:

		Print	Website	Sign*	Total
<b>Sledder Guide Magazine</b>	<b>Full page</b>	<b>\$3,000</b>	\$100	\$100	<b>\$3,200</b>
	<b>1/2 page</b>	<b>\$1,750</b>	\$100	\$100	<b>\$1,950</b>
	<b>1/4 page</b>	<b>\$1,000</b>	\$100	\$100	<b>\$1,200</b>
	<b>1/8 page</b>	<b>\$550</b>	\$100	\$100	<b>\$750</b>

**Bundle and save.** Website ad offered for \$100 (save \$250).

Parking Lot Sign ad offered for \$100 (save \$100)





## ACCOMMODATION

Find the perfect place to rest your head. From downtown hotel locations to sled in/out guesthouses and cabins, there is an accommodation option for every visitor's needs.



**COAST  
hillcrest hotel**

Revelstoke Accommodations,  
Food/Beverages & Spa Treatments  
All in one location



**For Sledder Rates Call  
1.855.837.3320**  
[www.hillcresthotel.com](http://www.hillcresthotel.com)



**INDOOR POOL, WATERSLIDE & HOT TUB**

**250.837.4741** On Trans-Canada Highway 1  
Just Above National Park & Mount Revelstoke

www.100000.com | Revelstoke, BC **RAMADA**



**Peaks Lodge**  
ESTABLISHED 1980

Sled in / Out  
Premium Fuel  
Secure Storage  
Compound  
Group Suits  
Drying Room  
Hot Tub, Sauna  
& Sled Rentals

Smoked BBQ  
Packed Lunches  
Cooker can Meals

p: 250.837.2178  
e: [info@peakslodge.com](mailto:info@peakslodge.com)  
[www.peakslodge.com](http://www.peakslodge.com)

## PARTS GEAR RENTALS & GUIDED TOURS

Photo credit: Tiana Rumak

Machine not performing up to par? Left your gloves on the sled deck? Maybe you are looking for a pro to show you where to go. Whatever your snowmobiling needs are, these local businesses have got you covered.



**Full Speed Rentals** **ONE STOP SLED SHOP**

Huge Inventory of Parts  
Helping to Get You Out  
& Riding the Next Day

All New 2021 Ski-Doo, Polaris  
& Yamaha Sleds for Rent  
Including Turbo and Expert Units

3km West of Boulder  
Mountain Turn Off on the  
Trans Canada Highway

**250-837-8883**  
[fullspeedrentals.com](http://fullspeedrentals.com) **Authorized Ski-Doo  
Service Center**



**GREAT CANADIAN  
SNOWMOBILES**

**MORE THAN 22 YEARS  
EXPERIENCE**  
**LARGEST TENURE IN NORTH  
AMERICA**  
**FULL EQUIPPED  
TOURS FOR ALL ABILITIES**

**RIDERREVELSTOKE.CA**  
**250-837-5630**

**YOUR ONE STOP SHOP FOR  
RIDING IN CANADA'S  
POWDER CAPITAL**

18

## MANUFACTURERS

Photo credit: umkay.com

Taking on the elements is no easy task. Make sure you have the right equipment to face the challenge.



**PRINOTH TRAIL, GROOMING  
TAME THE TRAIL**

**Polaris**



**2021 MOUNTAIN MAX LE 154**  
Lay the first tracks.

**YAMAHA**  
power sports



**TOBE**  
CHOOSE YOUR PATH

**TOBEOUTREAR.COM**

## DINING

Wondering where to re-fuel after a big day? There's no shortage of restaurants, pubs, and bars in Revelstoke. Whether you're looking to sit down to a traditional meal, enjoy a casual burger and beer, or unwind by a fireplace, you're sure to find a place to satisfy your cravings.



**Zalas**  
**Steak & Pizza  
Bar & Grill**

[www.zalasrestaurant.ca](http://www.zalasrestaurant.ca)

**Reservations & Pick-up  
250-837-5555**

Zala's courtesy limousine service is available  
to and from Zala's Restaurant.



**BOOTLEGGER**  
PUBLIC HOUSE

OPEN EVERY DAY 4-10PM  
GLACIER HOUSE RESORT  
(250) 837-9394



**Mr. Hebble**  
SWEET POTATO & REVELSTOKE, BC  
2015-2016

Make Your 123000 & 100000 Bonus Car Challenge!

**BREWERY TOURS | TASTING ROOM | RETAIL | GROWN IN FILLS**

2500 East Valley | [www.mrhebble.com](http://www.mrhebble.com) | 250.837.2716

19

## Website ad

**Deadline: Open**

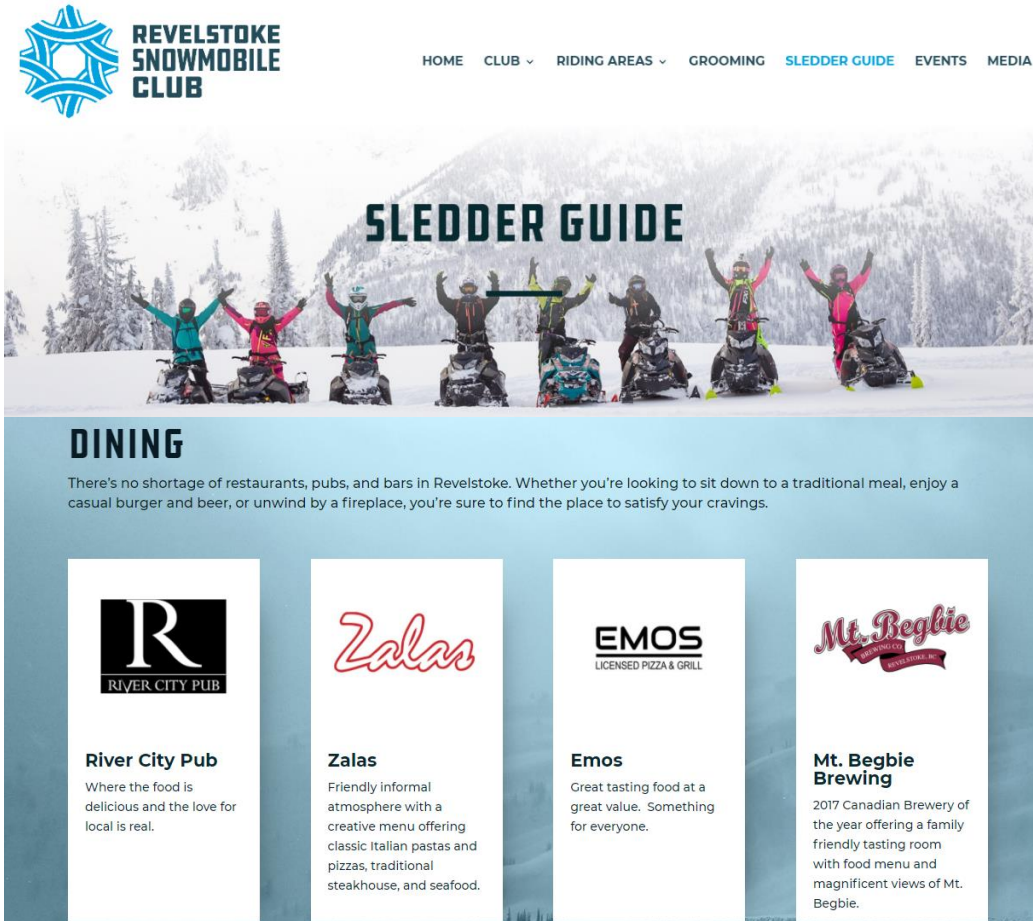
<https://sledrevelstoke.com/sledder-guide/>

This digital version of our flagship print magazine is a comprehensive guide to everything-you-need-to-know about sledding in Revelstoke. Once on the homepage, a single click directs snowmobilers to the Sledder Guide. Before clicking your business' logo and redirecting to the website, customers will read about what makes your business special.

### Pricing:

	Print	Website	Sign*	Total
<b>Website Ad</b>		<b>\$350</b>	<b>\$100</b>	<b>\$450</b>

**Bundle and save.** Parking Lot Sign offered for \$100 per space (save \$100).



The screenshot shows the website for the Revelstoke Snowmobile Club. At the top is the club's logo and a navigation menu with links: HOME, CLUB, RIDING AREAS, GROOMING, **SLEDDER GUIDE**, EVENTS, and MEDIA. Below the navigation is a large banner image of several people on snowmobiles in a snowy mountain landscape, with the text "SLEDDER GUIDE" overlaid. Underneath the banner is a section titled "DINING" with the text: "There's no shortage of restaurants, pubs, and bars in Revelstoke. Whether you're looking to sit down to a traditional meal, enjoy a casual burger and beer, or unwind by a fireplace, you're sure to find the place to satisfy your cravings." Below this text are four vertical cards, each featuring a business logo and a short description:

- River City Pub**: Where the food is delicious and the love for local is real.
- Zalas**: Friendly informal atmosphere with a creative menu offering classic Italian pastas and pizzas, traditional steakhouse, and seafood.
- EMOS**: Licensed PIZZA & GRILL. Great tasting food at a great value. Something for everyone.
- Mt. Begbie Brewing**: 2017 Canadian Brewery of the year offering a family friendly tasting room with food menu and magnificent views of Mt. Begbie.

## PARKING LOT SIGN

**Deadline: Open**

**Sign dimensions 16"x40"**

Our parking lot sign boards are visible from everywhere in the parking lots. There are three locations to choose from. Multiple spaces can be purchased should you want a larger sign.

**Pricing:**

	Print	Website	Sign*	Total
<b>Parking Lot Sign*</b>			\$200	\$200

\* Rate per space. Sign production fee paid directly to Signs Ink - Revelstoke.

## BOULDER

Boulder main staging area is our busiest parking lot with 15,000 sledders visiting each year. There are two sign board locations for this captive audience. Riders will either see your sign as they buy their tickets at the trailhead or when they are leaving after a long day of riding.

**Back Lot**

**1 space available**





Front Lot

8 spaces available



## FRISBY

Frisby's sign board is located right next to the ticket booth. Your ad receives the full attention of the 14,000 snowmobilers that pass it.

Frisby

9 spaces available

